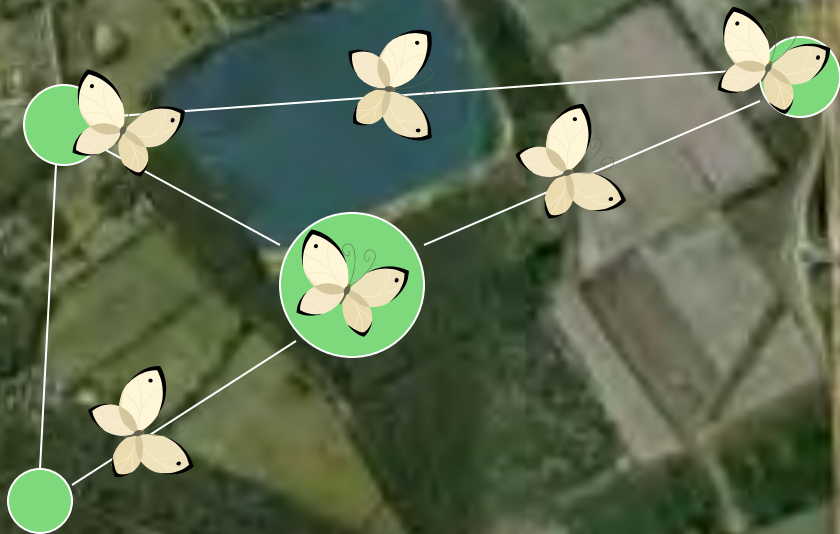




High Tech Campus
Eindhoven

Voldijn

Professor Holstlaan



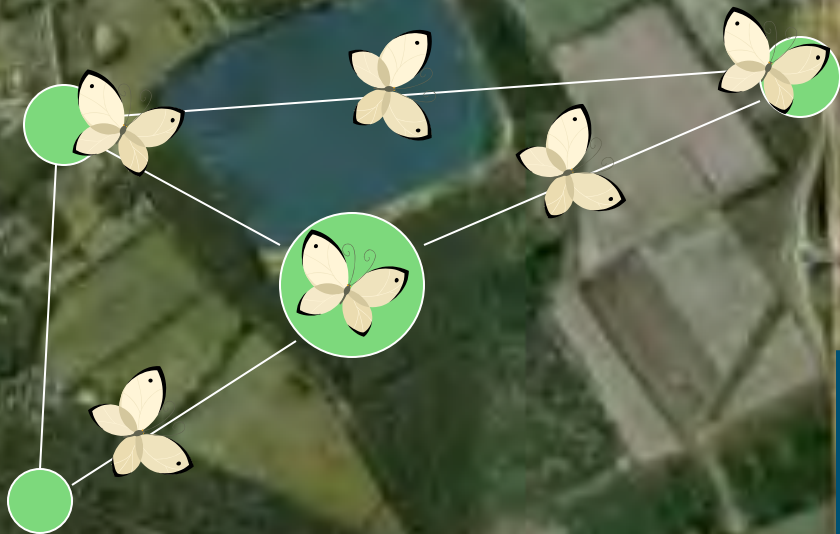
Kwetsbare metapopulatie van vlindersoort

High Tech Campus Eindhoven

Professor Holstlaan

Voldijn

● = Vlinderpopulatie



Kwetsbare metapopulatie
van vlindersoort

BEDRIJVEN
TERREIN



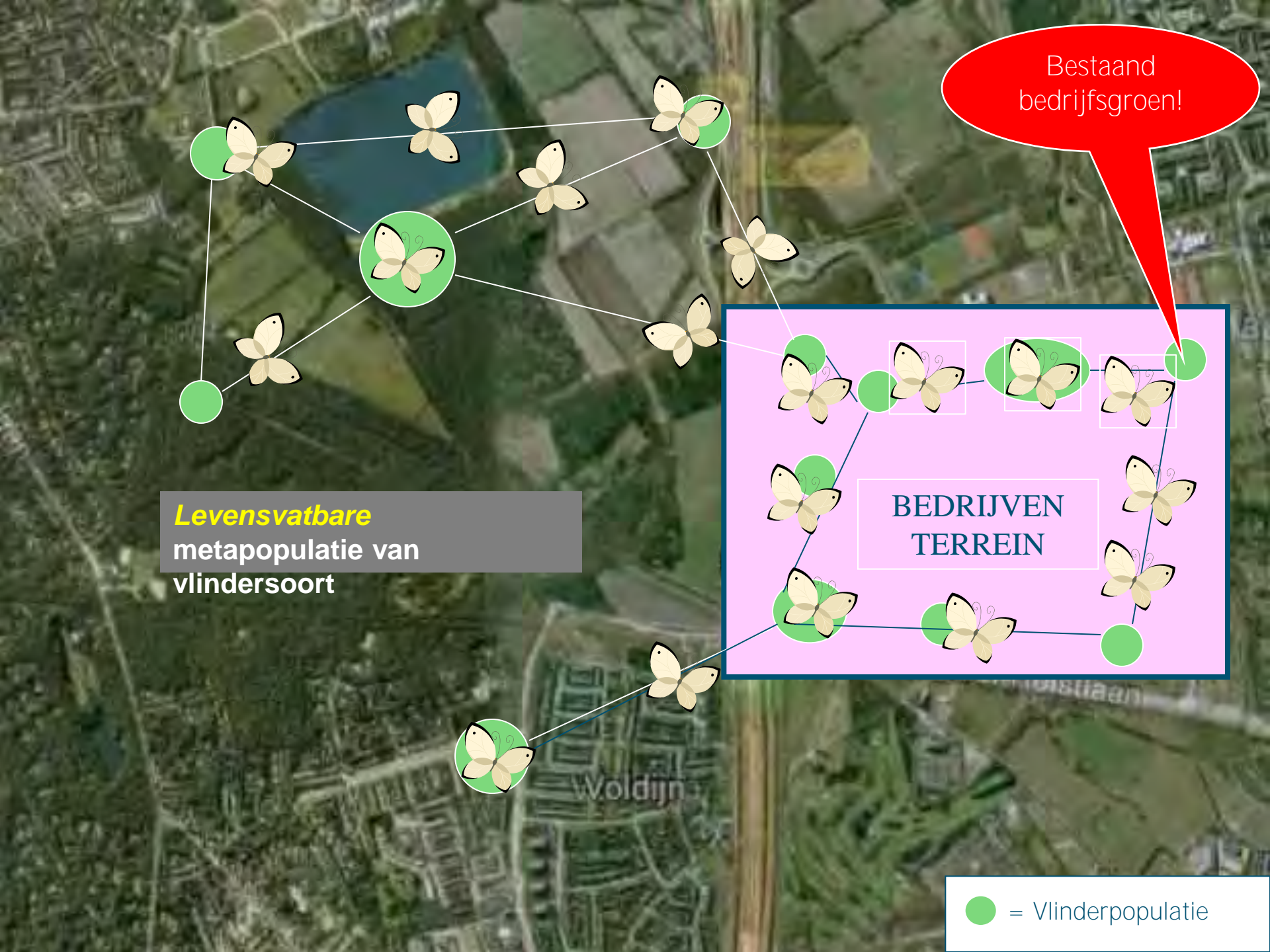
● = Vlinderpopulatie

Bestaand
bedrijfsgroen!

Levensvatbare
metapopulatie van
vlindersoort

BEDRIJVEN
TERREIN

● = Vlinderpopulatie



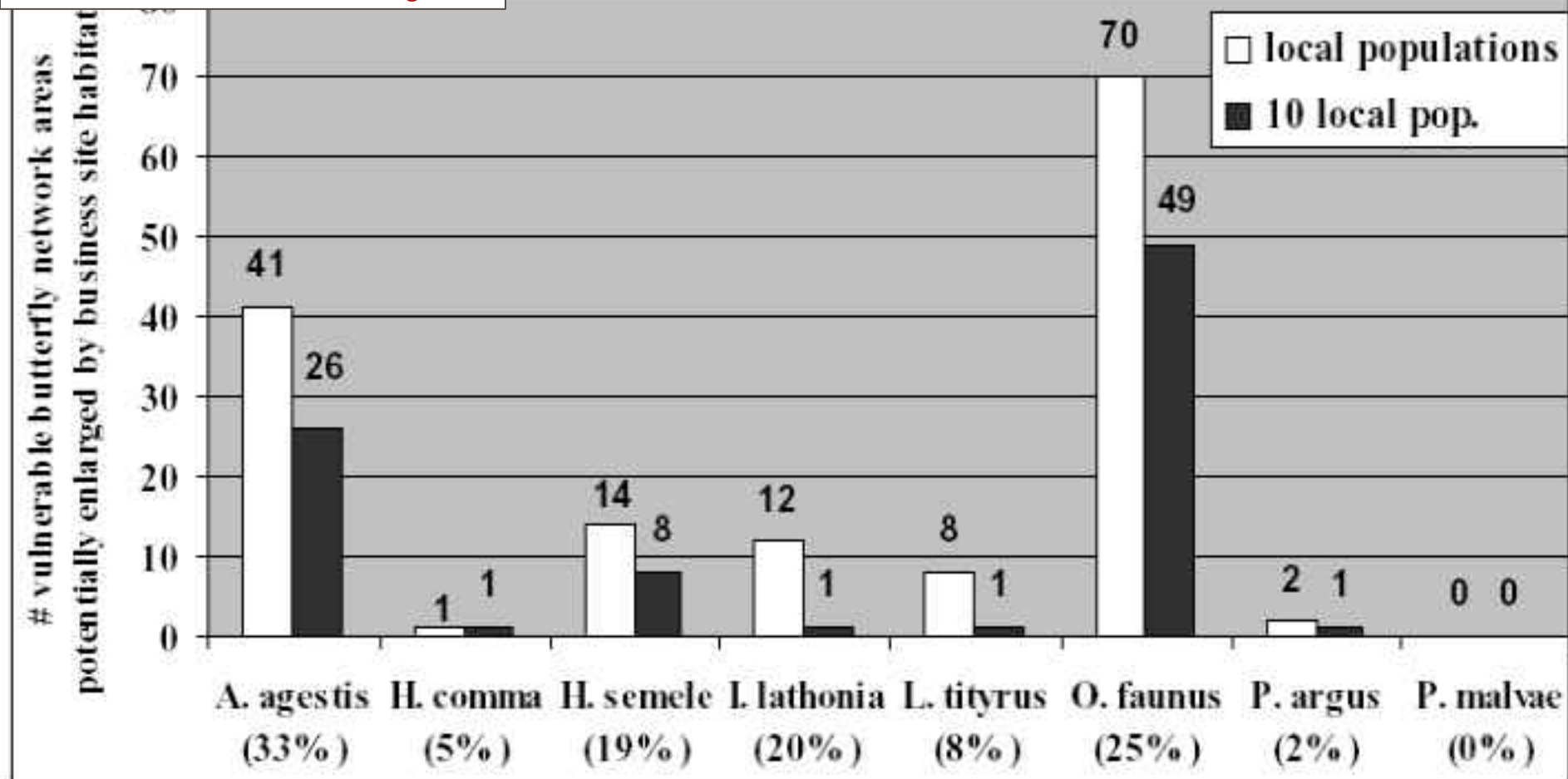


Figure 3. Number of vulnerable butterfly network areas that can be strengthened with additional habitat (for at least 1 local and for 10 local populations) at a neighboring business site. This number is also given as proportion (%) of the total number of vulnerable network areas. Vulnerable butterfly network area: contiguous area where the species was observed, with population considered as 'vulnerable for extinction' based on population size and network area size.

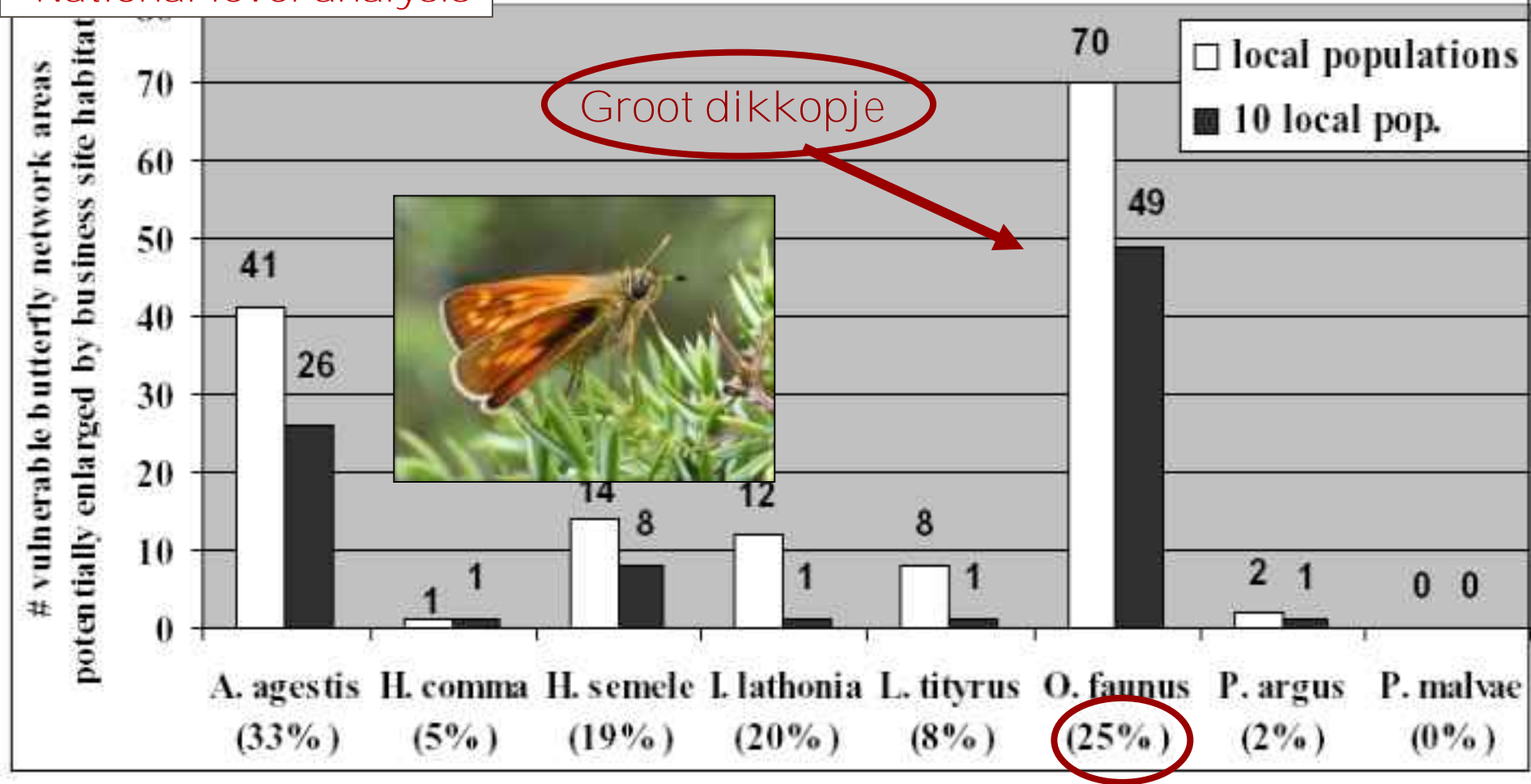


Figure 3. Number of vulnerable butterfly network areas that can be strengthened with additional habitat (for at least 1 local and for 10 local populations) at a neighboring business site. This number is also given as proportion (%) of the total number of vulnerable network areas. Vulnerable butterfly network area: contiguous area where the species was observed, with population considered as 'vulnerable for extinction' based on population size and network area size.

National level analysis

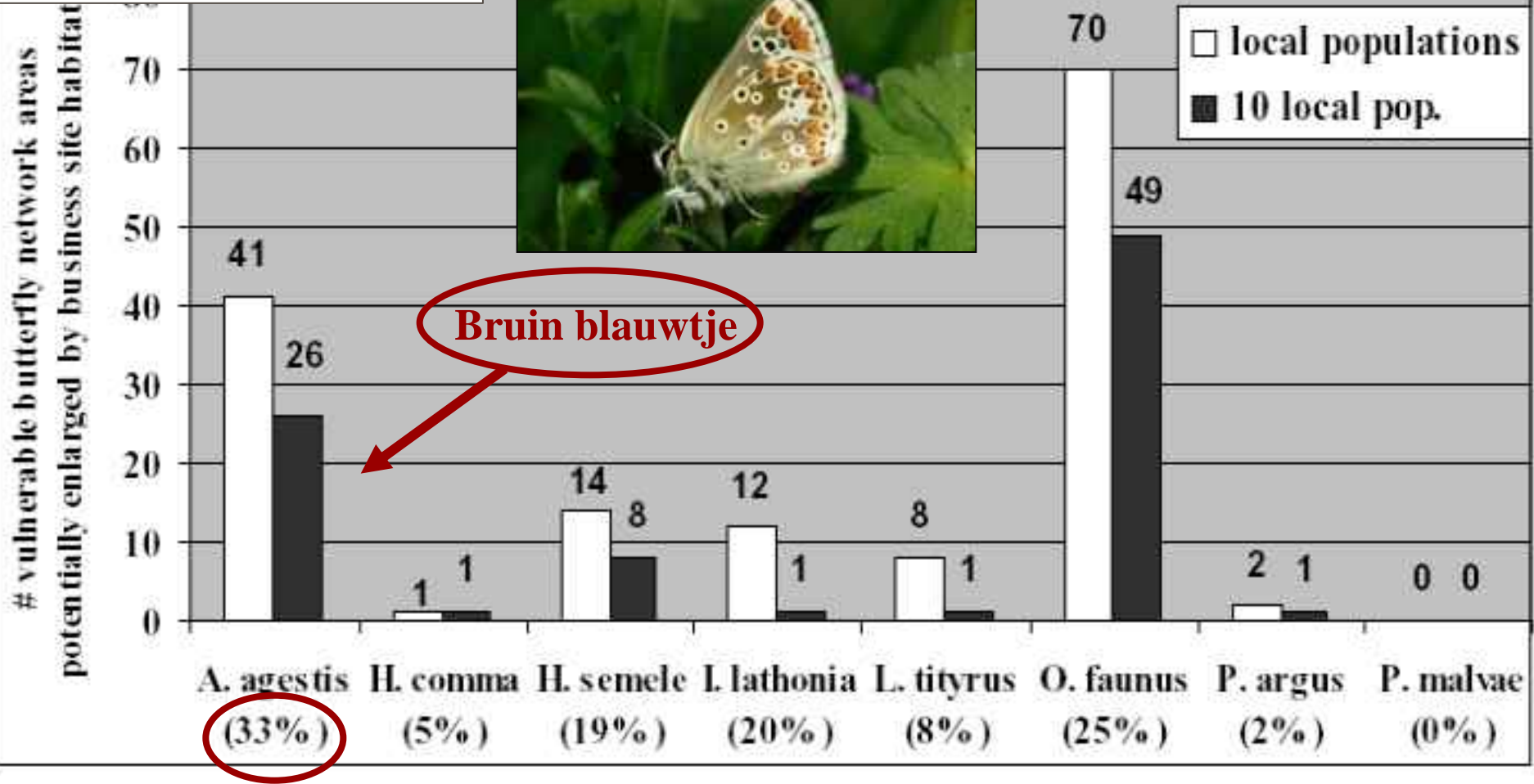


Figure 3. Number of vulnerable butterfly network areas that can be strengthened with additional habitat (for at least 1 local and for 10 local populations) at a neighboring business site. This number is also given as proportion (%) of the total number of vulnerable network areas. Vulnerable butterfly network area: contiguous area where the species was observed, with population considered as

Meerwaarde bedrijven voor natuurbehoud

Bedrijventerreinen:

- Specifiek habitat voor specifieke soorten (vb. pioniersoorten)
- Extra habitat voor soorten van klein oppervlak (vb. insecten)

Bedrijven:

- Vergroening terreinen >> beter kwaliteit werkomgeving
- Inzet bij ontwikkeling & beheer naburige natuur >> MVO: imago, bedrijfsvoering



Research

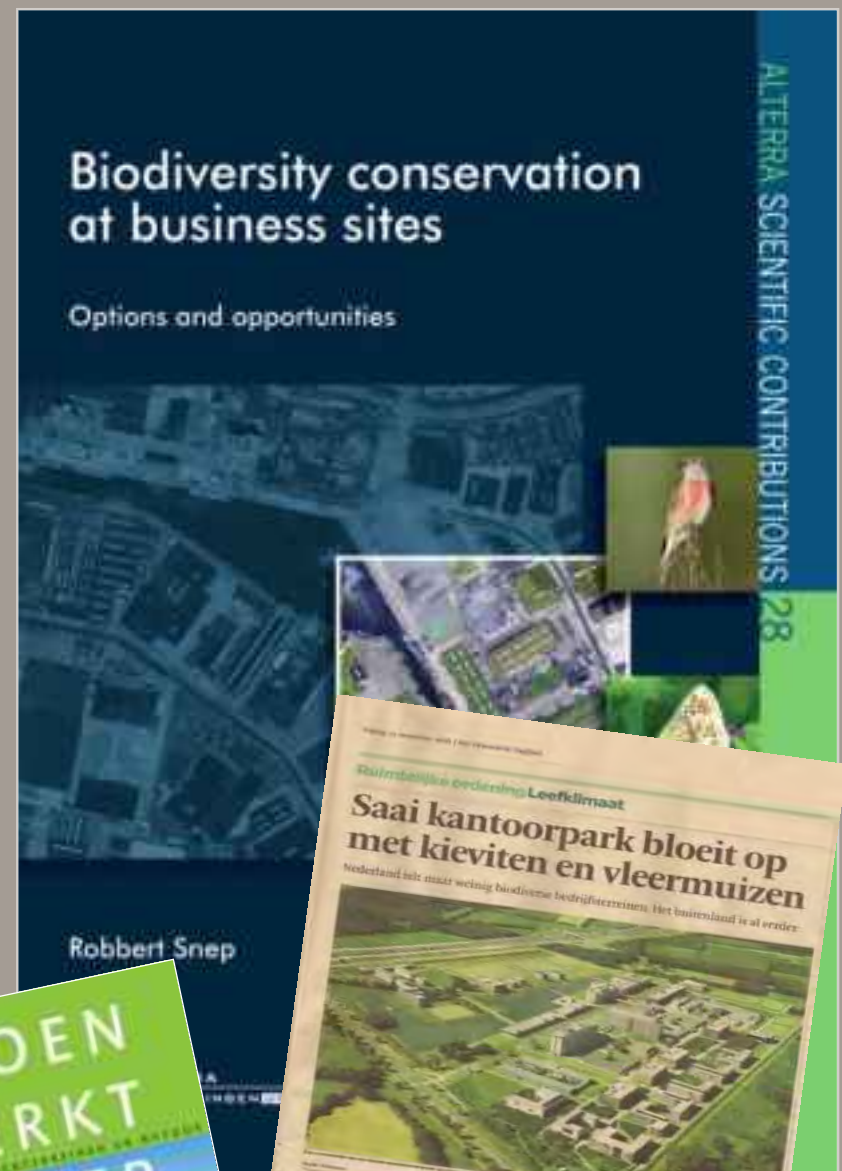
Snep, RPH, WallisDeVries, MF, Opdam, P (2011). *Conservation where people work: A role for business districts and industrial areas in enhancing endangered butterfly populations?* Landscape and Urban Planning 103 (1): 94 – 101.

Snep RPH, Van Ierland EC, Opdam P (2009). *Enhancing biodiversity at business sites: What are the options, and which of these do stakeholders prefer?* Landscape and Urban Planning 91: 26-35.

Snep RPH, Ottburg FGWA 2008. *The 'habitat backbone' as a nature conservation strategy for industrial areas: Lessons from the natterjack toad (Bufo calamita) in the Port of Antwerp (Belgium)*. Landscape Ecology 23: 1277-1289.

Snep RPH., Opdam PFM, Baveco JM, WallisDeVries MF, Timmermans W, Kwak RGM, Kuypers VHM 2006. *How peri-urban areas can strengthen animal populations in cities: a modeling approach*. Biological Conservation 127: 345-355.

Timmermans W, Snep RPH (2012). *Bridging the gap between architecture and biodiversity conservation: a step beyond 'greening' buildings*. In: Haas T (ed) SUSTAINABLE URBANISM AND BEYOND: Rethinking cities for the future. Rizzoli Press.



Deel 2 - Praktijk

沼津工場での取り組み

Approach in Numazu factory



2006年 : Excellent Stage 3 取得 Certification

敷地面積 534,671m² 緑地面積 422,390m² 緑被率79%
Lot area Green area Ratio of green coverage



多様な生物が生息する森
Forest where various living things live



遊水池周りの法面緑
Greening in slope around flood prevention reservoir



心地よい木陰をつくりだす豊かな緑
Rich green that produces comfortable shade of a tree

鳥瞰図
Bird's eye view



SONY

地域開放型公園工場
Park factory open to the community

緑豊かな公園工場 ~ インダストリアルパークを目指して ~ Green and lush park factory - Aiming for an industrial park -



'72 (創立) (Foundation)
1期緑地整備 (First-period green space development)

'82 (10周年) (10th Anniversary)
2期緑地整備 (Second-period green space development)

'92 (20周年) (20th Anniversary)
3期緑地整備 (Third-period green space development)

'95 (25周年) (25th Anniversary)
山林保護活動開始 (Start of mountain forest protection activities)

'98 (28周年) (28th Anniversary)
ソニーの森 部分開放 (ソニーの森 部分開放 (フィールド・アスレチック設置) (Partial opening of the Sony Forest (Establishment of field athletic facilities))

2000 (32周年) (32nd Anniversary)
ソニーの森 全面開放 (Full opening of the Sony Forest)
内閣総理大臣賞 (Prime Minister's Award)

'05 (37周年) (37th Anniversary)
SEGES Excellent Stage 3

'08 - (40周年) (40th Anniversary)
生物多様性への新たな取り組み (New approach to conservation of biodiversity)
アクロウの森づくり (Making of Owl's Forest)



ソニーの森の整備
Development of the Sony Forest



従業員の手によって森を作る
Making of the Forest by employees

敷地内緑化
Greening on the premises

屋上緑化 (気象緩和)
Rooftop gardening (climate alleviation)

観葉植物 約1300鉢を社内保有
About 1300 pots of foliage plants are held internally.

2008年11月～2010年4月 二-の森 里山復元活動 延べ参加 320名

November 2008 to April 2010 Sony Forest SATOYAMA restoration activities

Total number of people participated: 320

SONY



幸田町の木
ヤマザクラの保護
Protection of Kota town's
tree, yama zakura
(mountain cherry)



①里山復元のための
整備活動エリア
①Development
activity area for
SATOYAMA
restoration

②小学生の遠足時など
に活用できる、オリ
エンテーリングエ
リア
②Orienteering area
that can be used for
a field trip of
elementary school
students, etc.

昆虫の棲みか(ヤド)
・竹の廃材を組立、落葉を入れる
Insects' house (yard)
・ Assembling waste bamboo together
and putting fallen leaves



フクロウの棲む森
・フクロウが巣箱から池まで
の中を滑空する空間作り
Owls' Forest
・ Making of a space where owls
will fly in the forest from
birdhouses to the pond

③フクロウの棲む森づ
くりのための、整備工
リア
③Development
area for making Owls'
Forest





Summer

Spring

Map of Forest of Toyota

Experience nature with Wander Power

You can enjoy Forest of Toyota by using sense of eyes, hands, ears, nose and mouth (we call these Wander Power instead of 5 senses) and feel the nature with your heart!



Clothes



- All weathers, all seasons
- Long-sleeve shirt, long pants (Prevent from insect bite. Prefer elastic jacket clothes to prevent from bee attack)
- Hat, cap
- Sports shoes, hiking boots
- When it rains
- Rainwear (prefer separated shoes)
- Hair bands
- Better to bring
- Drinks, pocket heater in winter, sunscreen lotion

Do's and Don'ts

- There are poisonous snakes and flowers that you must be very careful to be forest.
- If you need help, DO NOT touch or be excited. Surely leave that area.
- DO NOT bring or take any plants, insects, and animals.
- DO NOT enter areas other than walking path. Also DO NOT enter the forest area for crossing, staying, or other activities.
- Leave your own garbage home with you.
- Do not throw cigarette butts, etc. into the forest.
- Do not use any tools.
- Do not use any equipment.
- Do not use any equipment.

Winter

Autumn

Timeline

- | | |
|-------------|---|
| 1995 | <i>Satoyama</i> development begins in a forest owned by TMC in the suburbs of Toyota City |
| 1997 | Forest of Toyota opens |
| 1998 | <i>Eco-no-Mori</i> Seminar, an environmental education program, conducted (continued until 2005)
Eco-monitoring conducted to measure the effects of development (continued until 2008) |
| 2001 | Hands-on nature programs for local elementary schoolchildren begin |
| 2003 | <i>Satoyama Learning Center Eco-no-Mori House</i> opens |

Milestones

- | | |
|-----------------|---|
| 1999 | Forest of Toyota wins Greenery Day, Natural Environment Distinguished Service Award |
| 2004 | Forest of Toyota wins Land, Infrastructure, Transport and Tourism Minister's Award at the 24th Green City Award |
| 2010 | Forest of Toyota wins Chairman's Award at the First Contest for Corporate Activities on Biodiversity |
| 2011 | Forest of Toyota certified at Superlative Stage under Social and Environmental Green Evaluation System (SEGES) |
| Feb 2012 | Cumulative visitors reached 100,000 persons |



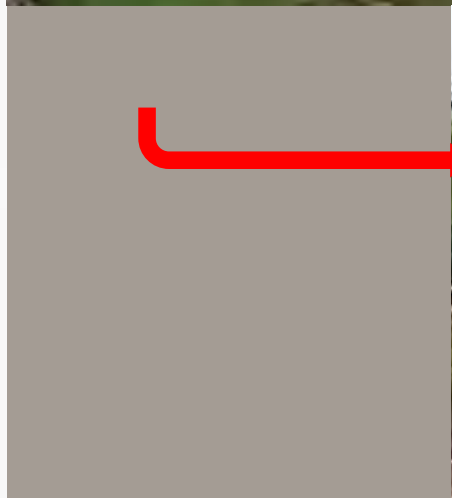




秋篠宮殿下

Environment

- ▶ Basic Philosophy
- ▶ Toyota Environmental Activities Grant Program
- ▶ Forest of Toyota (Japan)
- ▶ Toyota Shirakawa-Go Eco-Institute (Japan)
- ▶ Toyomori Institute of Sustainable Living
- ▶ TOYOTA Mie Miyagawa Mountain Forest
- ▶ Environmental Conservation at Office Sites and in the Areas Surrounding Them (Belgium)
- ▶ Toyota's APA Costa dos Corais (Environment Protection Area) (Brazil)
- ▶ Saving the Hyacinth Macaw (Brazil)
- ▶ Preventing the Desertification in China (China)
- ▶ Toyota China Youth Environmental Protection Aid Program (China)
- ▶ Toyota Weekend Farmers (Korea)
- ▶ Toyota Eco Youth (Malaysia/ Indonesia)
- ▶ Stop Global Warming (Thailand)
- ▶ Joint Initiative with Kew Gardens to Nurture Biodiversity (United Kingdom)
- ▶ Annual National Mayor's Challenge for Water Conservation (United States)
- ▶ TogetherGreen (United States)
- ▶ Eco-Schools(Europe)
- ▶ Rainforest Restoration Initiatives (Philippines)





WAGENINGEN
UNIVERSITY & RESEARCH

What We Do



We help make every act of conservation matter.

Celebrating and empowering all acts of conservation is at the core of what we do, whether it's a simple pollinator garden or a complex wetlands restoration.

We help companies further corporate goals.

WHC conservation programs advance companies' biodiversity, sustainability, employee engagement and community relations goals.

We help companies help nature.

Successful WHC conservation programs aligned with local, regional and national conservation priorities contribute to the collective positive outcome for the environment.

We build collaborations for conservation.

We partner with corporations, their employees, fellow conservation organizations, government agencies and community members to recognize and encourage wildlife habitat projects for conservation, education and recreation.

Our work is unparalleled.

We're the only conservation organization to work exclusively with corporate landowners to establish,



PROJECT GUIDANCES





Corporate Members

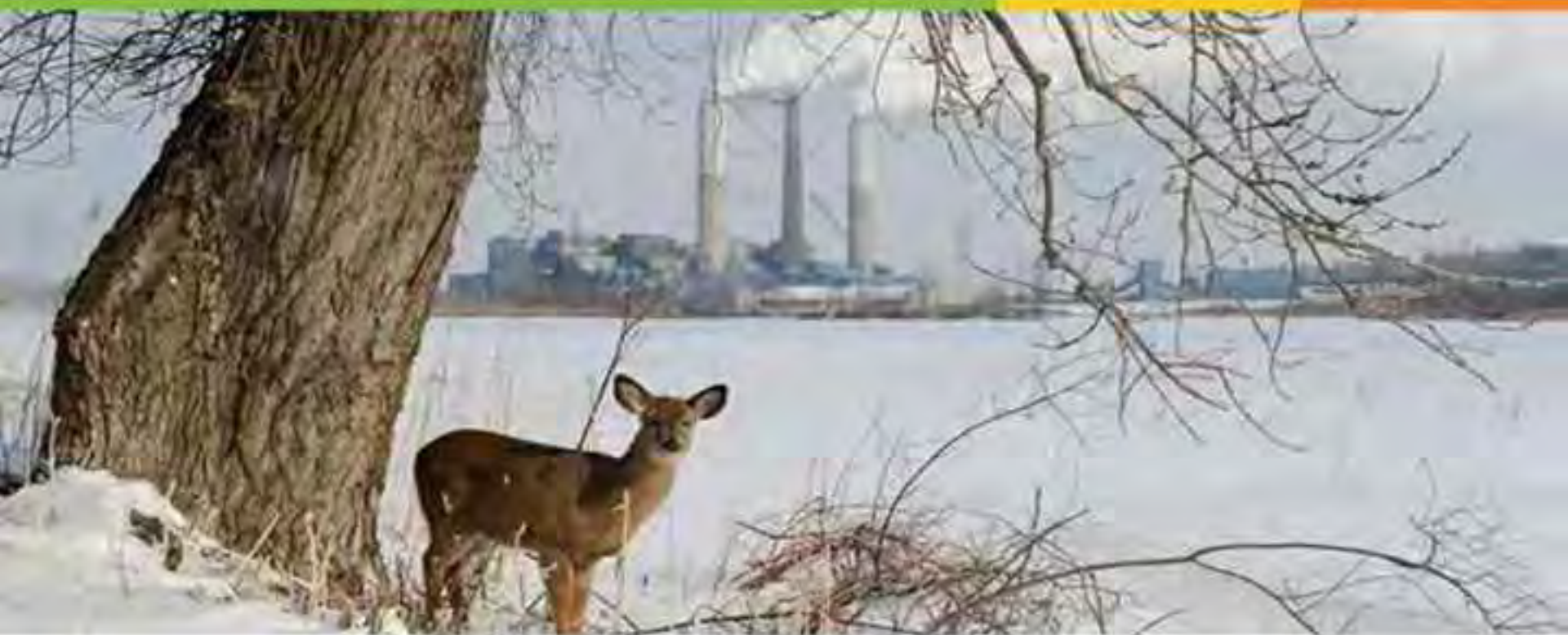
Sinds 1988!

[3M](#)
[Abbott](#)
[Albemarle Corporation](#)
[Alcor Inc.](#)
[American Electric Power](#)
[Anheuser-Busch Companies, Inc.](#)
[Ash Grove Cement Company](#)
[BASF Corporation](#)
[Bayer Corporation](#)
[BB&J](#)
[Benjamin Moore & Co.](#)
[BP](#)
[Bridgestone Americas Holding, Inc.](#)
[Bristol-Myers Squibb Company](#)
[Caterpillar](#)
[CEMEX](#)
[CH2M Hill](#)
[Chevron](#)
[CITGO Petroleum Corporation](#)
[Citigroup Inc.](#)
[ConocoPhillips](#)
[Conservation Capital, LLC](#)
[Constellation Energy](#)
[Consumers Energy](#)
[CourseCo, Inc.](#)
[DTE Energy](#)
[DuPont Company](#)
[Eli Lilly and Company](#)
[Ensign United States Drilling](#)
[ENTRIX](#)
[ENVIRON Holdings, Inc.](#)
[Environmental Logistic Services, LLC](#)
[Equitrans, LP](#)
[Exelon Corporation](#)
[ExxonMobil](#)
[Equipment Movers, Ltd.](#)
[Industrial Asphalt, Inc. and KBDJ, LP of Austin](#)
[ITC Holdings](#)
[JF New & Associates](#)
[Kinder Morgan](#)
[Koch Industries, Inc. & Subsidiaries](#)
[Lafarge](#)
[Marathon Oil Corporation](#)
[Master Brands](#)
[Merck & Company, Inc.](#)
[Monsanto Company](#)
[Motorola](#)
[Navistar, Inc.](#)
[Noble Energy, Inc.](#)
[NPC Services, Inc.](#)
[Occidental Petroleum Corporation](#)
[Oldcastle Materials](#)
[Ontario Power Generation](#)
[Pacific Gas & Electric](#)
[Pecco Holdings, Inc.](#)
[Pfizer, Inc.](#)
[PPG Industries, Inc.](#)
[Raytheon Company](#)
[Republic Services, Inc.](#)
[Sears Holdings Corporation](#)
[Shell Oil Company](#)
[Southern Nuclear Operating Company](#)
[Spectra Energy](#)
[Stantec](#)
[Talecris Biotherapeutics](#)
[Tennessee Valley Authority](#)
[Terra International \(Canada\) Inc.](#)
[The Boeing Company](#)
[The Dow Chemical Company](#)
[Total Petrochemicals USA, Inc.](#)
[Toyota Motor Manufacturing North America, Inc.](#)



How to create a wildlife habitat with Wildlife Habitat Council and General Motors





Additional Wildlife Habitat Council Certification for the Monroe Power Plant

DTE Energy's Monroe Power Plant has been designated a certified site since 1999. It became the first DTE site also certified under the WWC Corporate Lands for Learning education.

The plant received the prestigious designation in part because of its partnership with the Monroe Public Schools. The plant hosts as many students as possible throughout the year - usually a two- to three hour period. Then, depending on the subject matter, tool. Spring and fall bird walks are popular events for the students, enabling them to observe and learn about local and migratory bird activities.





The miracles of science™

Select Industry

- Select -



Sustainability



DuPont Home » Sustainability in Action » Environmental Stewardship

Creating Wildlife Habitats



DuPont has a strategy for land conservation that includes placing surplus property into protected status through the company's Land Legacy Program, as well as lending support to activities in local communities aimed at preserving green space. In addition, DuPont manages as much of its company property as possible for wildlife habitat.

Currently, 16 DuPont sites around the globe have been certified by the Wildlife Habitat Council, a Maryland-based non-profit organization dedicated to increasing the quality and amount of wildlife

- Sustainability
- DuPont's Role
- Where We Stand
- Marketplace Goals
- DuPont Footprint Goals
- Market Solutions
- Sustainability Online Media Room
- Performance and Reporting
- External Recognition
- Sustainability Leadership
- Sustainability in Action

Sustainability by Example







Brainport Industry Campus

